

Certificate No: C4TM – 000662 **Issued:** 31st August 2011

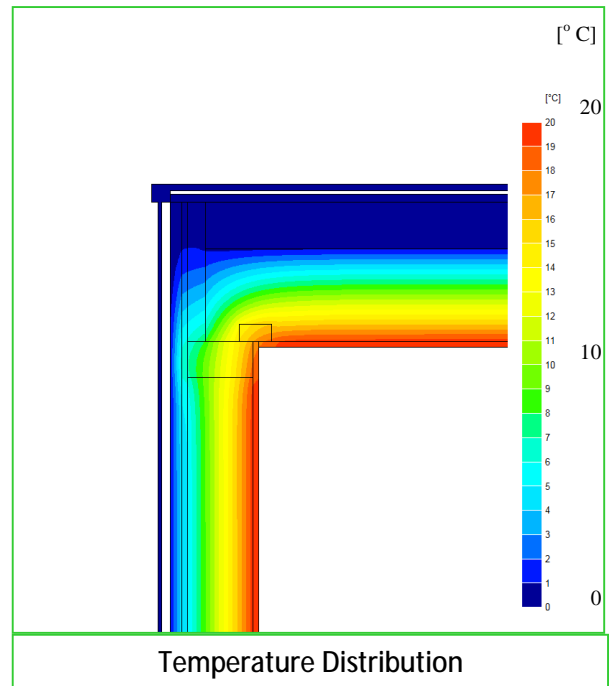
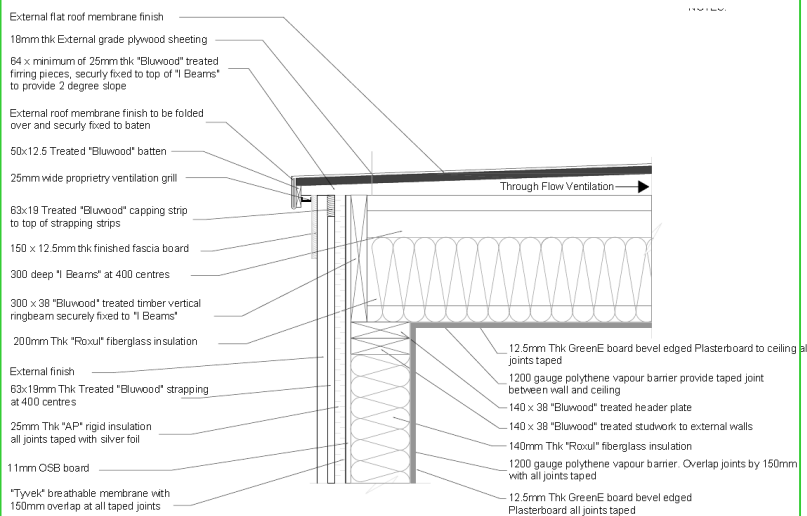
Issued to:
Canadian Timber Group
Steve Brown
4a Mansion House
Newbury
Berkshire
RG14 5ES
01635 886233
<http://canadiantimberhomes.co.uk>

General Construction Specification:
(see detail below for full construction)

Main/Load-bearing:	140mm Timber frame wall
Insulation:	Mineral wool $\lambda=0.040$ W/mK 140mm Mineral wool
Cavity:	19mm ventilated cavity behind boarding
Cladding:	Timber or Cementitious boarding

Description:	Drawing Ref:DE 060 V1 CTH 140mm standard Single skin
Reference:	Gable Insulation @ rafter

Junction Detail



Temperature Distribution

Linear Thermal Transmittance W/m.K	
$\Psi =$	0.046
Temperature Factor ³ for Humidity and Mould	
$f =$	0.899

Calculation Prepared By: Andrew Dunning *BSc MIWSc MSc DIC*

Notes:

- Ψ and f are only valid for the detail drawn and described above.
- Details based on Canadian Timber Group standard details
- U-values for the flanking walls are $U \leq 0.23$ W/m².K.
- In dwellings, a temperature factor f that is >0.75 would avoid the risk of mould growth.
- Calculations have been performed in accordance with:
 - EN ISO 10211_2007 (British Standards)
 - IP 1/06 & BR497 (BRE Press)
 and with reference to the following publications:
 - EN ISO 6946 (British Standards), BR443 (BRE Press)